

MMA +BPO 2K Airless Spraying Line Striper For High Way

Our Product Introduction

for more products please visit us on wagetraffic.com

Basic Information

- Place of Origin: China
- Brand Name: WAGE
- Certification: EMS OHSMS
- Model Number: HG-DC
- Minimum Order Quantity: 1 set
- Price: FOB 27500-28500USD / set
- Packaging Details: Composite board box
- Delivery Time: 1 to 4 weeks
- Payment Terms: L/C, T/T, Western Union, MoneyGram
- Supply Ability: 10 set per week

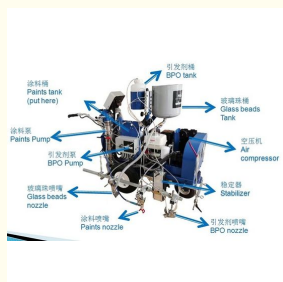


Product Specification

- Paint Type: Double Component
- Marking Model: Spraying
- Paints: 98:2 MMA +BPO
- Move Mold: Booster Pushing
- Special For: Air Port , Port, Rainy Area
- Curing: Quickly Drying In 5 Minute
- Water Proof: Rain Or Water Proof In 5 Minute
- Working: Max -30
- Control System: PLC
- Dimension: 2700*850*1150 Mm
- Material: Steel
- Spray Pressure: 21 Mpa
- Spray Thickness: 0.2-2mm
- Spray Width: 50-150mm
- Highlight: **High Way Spraying Line Striper.**



More Images



Product Description

98:2 MMA + BPO Two Components Quickly Drying Spraying Road Marking Machine

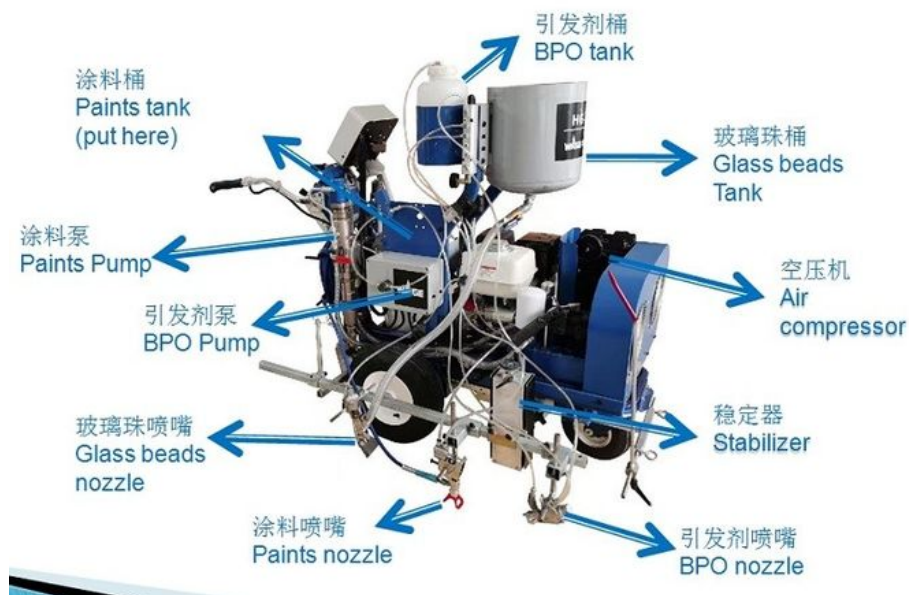
98:2 MMA + BPO two components quickly drying spraying road line marking machine



Advantage:

1. Safe, reliable, durable.
2. Environmental friendly.
3. Quickly drying – construction fast, quickly curing in 5 minutes achieved, full construction process can be finished in 1 hour.
4. Curing even at cold temperature, max -30 , can working on any season almost.
5. rain or water proof within minutes, suit well in rainy climate

Marking Machine structure



Application

Special good for airport, port, and traffic hub, heavy traffic road, rainy pavement etc.



Traffic hub



Rainy pavement



Airport

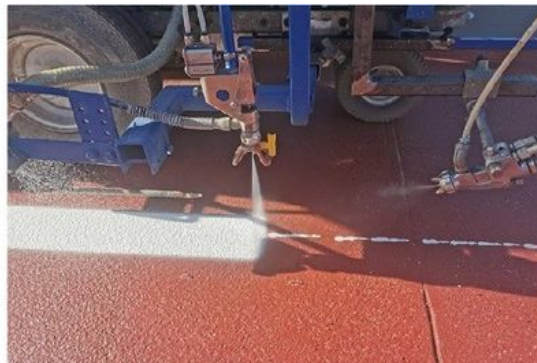


Port

Characters

Main engine:	13 HP Honda air-cooled gasoline engine
Auxiliary engine:	6.5HP Honda air-cooled gasoline engine
Marking type:	Double components spraying(98:2)
Outfitted with:	Micro metering pump, Flow sensor, Touching screen
Drive type:	Hydrostatic drive
Moving speed:	Forward:16km/h, backward: 10km/h
Climbing:	20 degrees
Glass bead volume:	20L
Spreading system:	Pneumatic spraying
Max working pressure:	21 Mpa
Compressor working pressure:	1.0 Mpa
Max flow rate of coating:	8.14L/max
BPO flow :	0-1.5L/minute
External dimensions:	2700*850*1150 mm
Net weight:	320kg

Spraying way



Construction spot:



Busy street



Bridge



Contact:

Rita QU

Xi'an Wage Traffic Infrastructure Installation Co.,LTD

Mail: wagetrffic@hotmail.com Cell/ Whatsapp: +86 15591818803

Add:Room 401, Unit 2, Bilding 2, Shenglong Plaza, Weiyang Road, Xi'an, 710016, Shaanxi, China



Xian WAGE Traffic Infrastructure Installation Co., Ltd.



+86 15591818803



rita@wagetrffic.com



wagetrffic.com

Room 401, Unit 2, Biulding 2, Shenglong Plaza, Weiyang Road, Xi'an, 710016, Shaanxi, China